



FastRack510-6dg™ Supporting Florida Power & Light Headquarters Rooftop PV Installation (2022)

Key Project Facts:

Location

Palm Beach Gardens, FL

System Size

950.54 kW-DC

Mounting System

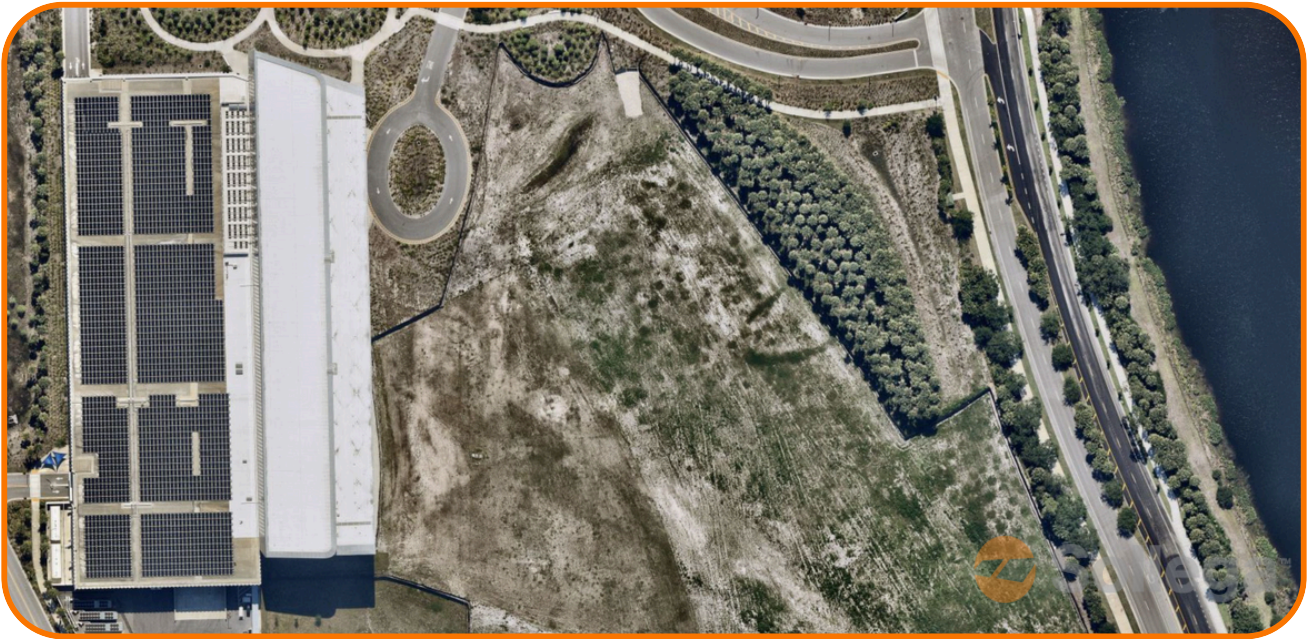
Sollega™ FastRack 510 at 6° tilt

Modules:

2486 LG 405W Modules

Sollega supplied the FastRack (FR510-6dg) ballasted mounting system for the installation on Florida Power & Light and NextEra Energy's new 270,000 sqft headquarters PGA office building and three-story parking garage with 38 electric vehicle charging stations.

As this location is in an area with often unpredictable weather patterns, this array was constructed to withstand up to 165 mph wind speeds, made possible by the deployment of midbuckets which enabled more blocks to be used and increased the overall ballast weight. The architecture of the building was also designed with the weight of a PV system in mind. Sollega's FR510-6dg was utilized due to its proven track record and high corrosion resistance to fully



ballast (9 PSF) the 950.54 kW array on the top floor of the facility with zero attachments. The BASF Ultramid™ material will not rust or corrode despite the proximity to the Atlantic Ocean. Sollega is proud to have been selected to provide our racking and engineering expertise for this headquarters.

This fully ballasted 950.54 kW array on the top floor of the PGA facility has a total of 2486 LG 405W modules. The one-piece FR510-6dg is a "build as you go" system which means that it's quick to ship, stage, and install while the 6dg tilt angle achieves a 80% GCR.



"Sollega's team was great to work with and the racking was simple, quick, and intuitive for my team to install."

-Build's EPC Partner



Contact Information:



[Sollega.com](https://www.sollega.com)



(415) 648-1299



info@sollega.com